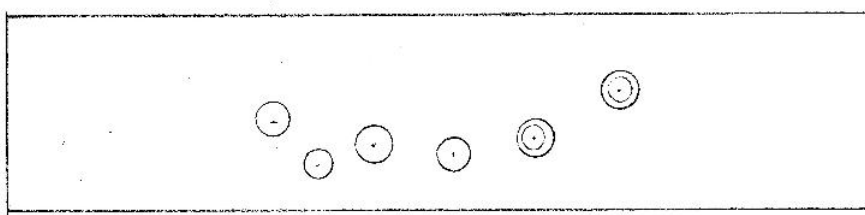


**Gissing farm 7.12.21** (Drawings and some photos taken from work done by Pauline and David Rimmer previously)

HOXNE SOUTH GREEN TM 17 NE 2/125 Gissings Farmhouse II Farmhouse. C16-C17, in 2 or possibly 3 phases, forming a single long range. Timber framed, all encased in colourwashed brick, dated on the front by an oval tablet inscribed 'T.M 1794'. A range of 4 widely-spaced windows, old 3- light casements under segmental arches. To the left a lobby entrance: 4-panel door and gabled porch, the upper part with open timberwork and wavy bargeboards. Internally much of the structure is papered over. Good C16 planked partition with moulded muntins, dividing hall from cross-passage. Adjacent service cross-partition removed. Plain but substantial joists in service cell, with evidence for a ladder stair. Ovolo bridging beam in parlour. Roof over parlour has clasped and butt purlins with cranked wind bracing. Over the hall and service cell there are diminished stepped butt purlins, a later C17 re-roofing. Beyond the original service cell the house has been extended by 2 bays, perhaps c.1700.

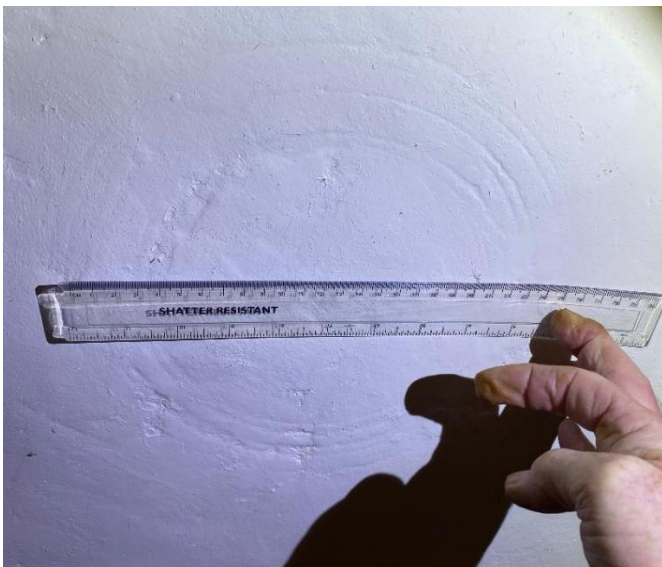
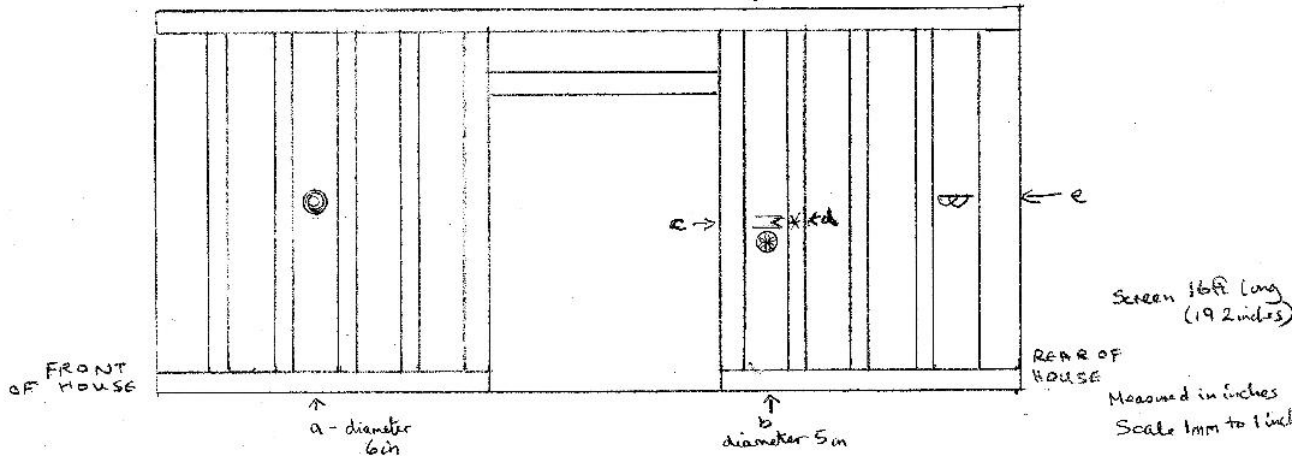
GISSING FARMHOUSE, SOUTH GREEN, HOXNE SUFFOLK

Cross Passage Ceiling



Circle diameters between 7 and 9 inches

Planks and Muntin Screen facing Kitchen (Hall side of cross passage)  
(Hall side of screen plastered over)







Much work already done by Pauline and David Rimmer. A number (6) of compass drawn circles in the plaster in the ceiling of the cross passage (see diagram) up to 26cm in diameter. On the 16<sup>th</sup> century planked partition from left to right: compass drawn circles within each other (5 circles) 15cm. To the right of the door, daisy wheel 10 cm diameter, 6 point "star". Large (20.5cm wide) "W" with curved base and horizontal lined top. On the beam which would have contained the second partition of the cross passage there are a number of marks which are in part carpenter's marks. The plaster work above the cross passage is likely to pre-date major alterations carried out around 1794 when one partition of the cross passage is likely to have been removed.

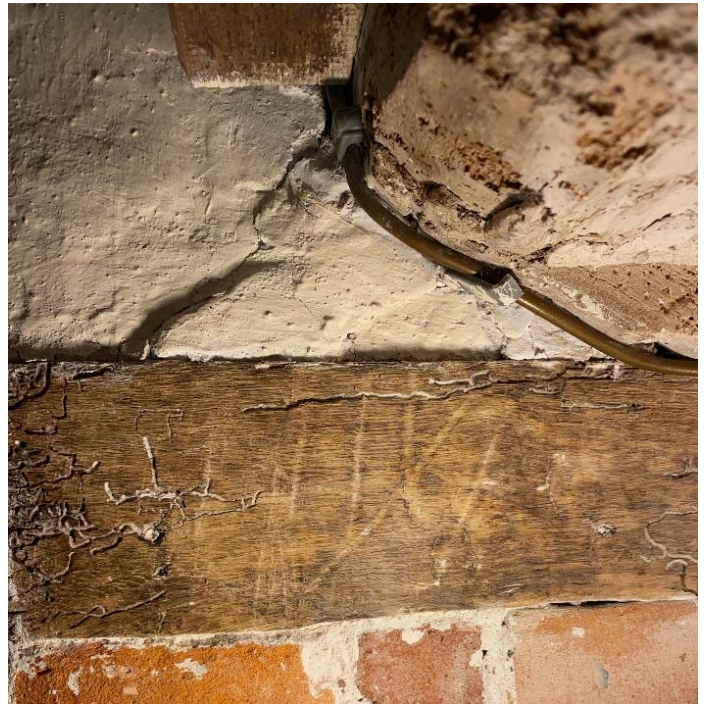




Dairy, to the East. Ground floor, central beam



Dairy, ground floor – central beam.  
Carpenter's marks but also MR





First floor, west bedroom, fireplace

Three taper marks. Marks for attaching later plaster. Some scratches, no clear pattern or frequency.



Ground floor, Victorian door



2cm diameter, compass drawn circle on the door which is Victorian and dates the mark as Victorian or later.

Much of the marking is from compass drawn circles in the area of the cross passage. Star (\*) pattern and daisy wheel on the partition. There is one "W" on the partition of the cross passage and possibly one MR in the dairy on the central ceiling beam. Three taper marks on the bressummer in the west first floor bedroom.